

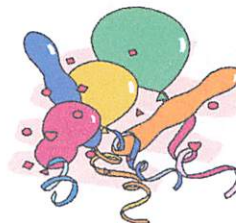


GROSSMAN'S DELI & GRILL

2005 HWY. 35, (Towne shopping center)
Oakhurst, N.J. 07755

Hours: Mon & Tues 7:30 to 3 .Wed—Fri. 7:30a.m. - 7 p.m., Saturday 9 a.m. -4 p.m.

www.grossmansdeli.com Phone 732-531-4709



#1 **TRAY OF Chicken fingers**
50 pc fingers. \$55 100 pc fingers \$100

#2 **DECORATED PARTY PLATTER**
Serves 10-15
Freshly prepared for you.
Includes Roast Beef, Turkey Breast, Imported boiled Ham,
Hard Salami, Imported Swiss Cheese, American cheese,
Sliced Pickles, Rolls and Rye Bread.
Your choice of Potato Salad, Macaroni Salad, or Cole Slaw.
Mustard and Mayonnaise included!
All tastefully arranged on a tray!
\$99.00

#3 **FINGER SANDWICHES**
Tasty, bite size assorted sandwiches made with
Imported Ham and Cheese, Roast Beef, Turkey Breast,
Shrimp Salad and Chicken Salad.
All freshly made and placed on a tray!
40 pieces FULL TRAY (serves 10-15) \$90
20 pieces HALF TRAY (serves 5-8) \$48

#4 **TRAY OF DELICIOUS ASSORTED SUBS**
Assorted pieces of our famous subs.
All ready to go!
40 pieces FULL TRAY (serves 10 - 15) \$74
20 pieces HALF TRAY (serves 5-8) \$43

#5 **DELI STUFFER SANDWICHES**
Soft rolls, All stuffed with our famous
homemade salads.
(shrimp, egg , tuna and chicken.)
All garnished and ready for your table!
20 rolls FULL TRAY (serves 10-15) \$95
10 rolls HALF TRAY (serves 5-8) \$55

#6 **GIANT PARTY SUBS**
Your choice of meats or salads.
Placed on a cutting board, ready for you to serve!
6 foot Serves 25-30 \$105 & Up
3 Foot Serves 10-15 \$65 & Up

#8 **SLOPPY JOE TRAYS**
A combination of Turkey and Corned Beef,
and Roast Beef and Turkey on 3 slices of bread,
with cole slaw and Russian dressing.
A real treat!
40 pieces FULL TRAY (serves 12-16) \$110
20 pieces HALF TRAY (serves 6-8) \$62

#9 **THE CROWD PLEASER**
Includes Roast Beef, Baked Virginia
Ham, Corned Beef, Turkey Breast,
Hard Salami, American Cheese, Swiss
Cheese, Muenster Cheese,
rye bread, Hard rolls, pickles, potato salad,
cole slaw and macaroni salad.
Mustard and mayonnaise included.
This one is fit for a king!
20 Person Minimum
\$9.39 Per Person

#10 **GARDEN SALAD**
Fresh veggies tossed with crisp green lettuce
on a platter. Your choice of dressing.
(thousand island, Italian or ranch dressing)
SMALL (serves 5-9) \$27
MEDIUM (serves 10-15) \$38
LARGE (serves 16-20) \$50

#11 **CHEF'S SALAD**
Mixed green, tomatoes, and hard boiled eggs,
with julienne slices of Roast Beef,
Turkey Breast, Ham, and Swiss Cheese.
Your choice of dressings. (Italian, thousand
island or ranch dressing)
SMALL (serves 5-9) \$38
MEDIUM (serves 10-15) \$55
LARGE (serves 16-20) \$69

#12 **NEW WRAP TRAY**
Assortment of 1 thru 5 on our regular wrap menu!
Very colorful and tasty.
60 pieces FULL TRAY (serves 10 to 15) \$104
30 pieces HALF TRAY (serves 5-8) \$60

#13 **NEW BLACK FOREST SANDWICHES**
Oven Roasted Turkey Breast sliced thin,
topped with Swiss cheese, cole slaw and
Russian dressing on fresh
pumpnickel bread
40 pieces FULL TRAY (served 10-15) \$94
20 pieces HALF TRAY (serves 5-8) \$53



PLATES, CUPS, FORKS, SPOONS, KNIVES AVAILABLE AT EXTRA CHARGE.

Master Card Visa American Express Cash

Please order at least one day in advance!